

# Echizen Town Flood Hazard Map

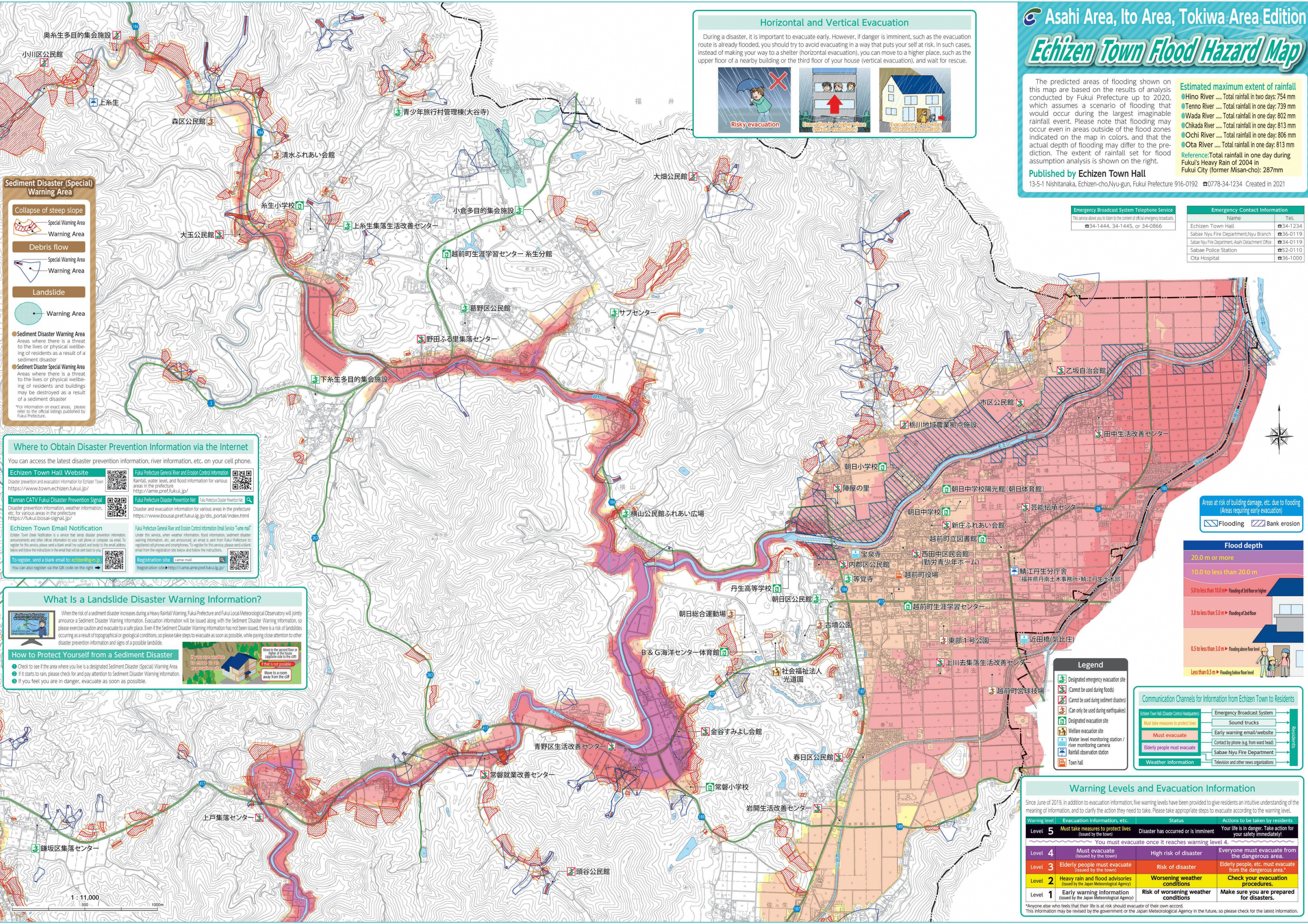
The predicted areas of flooding shown on this map are based on the results of analysis conducted by Fukui Prefecture up to 2020, which assumes a scenario of flooding that would occur during the largest imaginable rainfall event. Please note that flooding may occur even in areas outside of the flood zones indicated on the map in colors, and that the actual depth of flooding may differ to the prediction. The extent of rainfall set for flood assumption analysis is shown on the right.

- Estimated maximum extent of rainfall**
- Hino River ..... Total rainfall in two days: 754 mm
  - Tenno River ..... Total rainfall in one day: 739 mm
  - Wada River ..... Total rainfall in one day: 802 mm
  - Chikada River ..... Total rainfall in one day: 813 mm
  - Ochi River ..... Total rainfall in one day: 806 mm
  - Ota River ..... Total rainfall in one day: 813 mm
- Reference: Total rainfall in one day during Fukui's Heavy Rain of 2004 in Fukui City (former Misan-cho): 287mm

**Published by Echizen Town Hall**  
13-5-1 Nishitanaka, Echizen-cho, Nyu-gun, Fukui Prefecture 916-0192 ☎0778-34-1234 Created in 2021

### Horizontal and Vertical Evacuation

During a disaster, it is important to evacuate early. However, if danger is imminent, such as the evacuation route is already flooded, you should try to avoid evacuating in a way that puts your self at risk. In such cases, instead of making your way to a shelter (horizontal evacuation), you can move to a higher place, such as the upper floor of a nearby building or the third floor of your house (vertical evacuation), and wait for rescue.



### Sediment Disaster (Special) Warning Area

- Collapse of steep slope**
  - Special Warning Area
  - Warning Area
- Debris flow**
  - Special Warning Area
  - Warning Area
- Landslide**
  - Warning Area

**Sediment Disaster Warning Area**  
Areas where there is a threat to the lives or physical well-being of residents as a result of a sediment disaster

**Sediment Disaster Special Warning Area**  
Areas where there is a threat to the lives or physical well-being of residents and buildings may be destroyed as a result of a sediment disaster

\*For information on exact areas, please refer to the official listings published by Fukui Prefecture.

### Where to Obtain Disaster Prevention Information via the Internet

You can access the latest disaster prevention information, river information, etc. on your cell phone.

- Echizen Town Hall Website**  
Disaster prevention and evacuation information for Echizen Town  
<https://www.town.echizen.fukui.jp/>
- Fukui Prefecture General River and Erosion Control Information**  
Rainfall, water level, and flood information for various areas in the prefecture  
<https://ame.pref.fukui.jp/>
- Tanman CATV Fukui Disaster Prevention Signal**  
Disaster prevention information, weather information, etc. for various areas in the prefecture  
<https://fukui.local-signal.jp/>
- Fukui Prefecture Disaster Prevention Net**  
Disaster and evacuation information for various areas in the prefecture  
[https://www.bousai.pref.fukui.lg.jp/ds\\_portal/index.html](https://www.bousai.pref.fukui.lg.jp/ds_portal/index.html)
- Echizen Town Email Notification**  
Under this service, when weather information, flood information, sediment disaster warning information, etc. are announced, an email is sent from Fukui Prefecture to registered cell phones and smartphones. To register for this service, please send a blank email to the email address below and follow the instructions in the email that will be sent back to you.
- Fukui Prefecture General River and Erosion Control Information Email Service "Name Mail"**  
Under this service, when weather information, flood information, sediment disaster warning information, etc. are announced, an email is sent from Fukui Prefecture to registered cell phones and smartphones. To register for this service, please send a blank email to the email address below and follow the instructions in the email that will be sent back to you.

To register, send a blank email to: [echizen@ig-m.jp](mailto:echizen@ig-m.jp)

Registration site: <https://name.ame.pref.fukui.lg.jp/>

### What Is a Landslide Disaster Warning Information?

When the risk of a sediment disaster increases during a Heavy Rainfall Warning, Fukui Prefecture and Fukui Local Meteorological Observatory will jointly announce a Sediment Disaster Warning Information. Evacuation information will be issued along with the Sediment Disaster Warning Information, so please exercise caution and evacuate to a safe place. Even if the Sediment Disaster Warning Information has not been issued, there is a risk of landslides occurring as a result of topographical or geological conditions, so please take steps to evacuate as soon as possible, while paying close attention to other disaster prevention information and signs of a possible landslide.

### How to Protect Yourself from a Sediment Disaster

- Check to see if the area where you live is a designated Sediment Disaster (Special) Warning Area.
- If it starts to rain, please check for and pay attention to Sediment Disaster Warning information.
- If you feel you are in danger, evacuate as soon as possible.

If you are unable to evacuate to a safe place, if it is not possible, move to the second floor or higher of the house opposite side of the slope. If it is not possible, move to a room away from the cut.

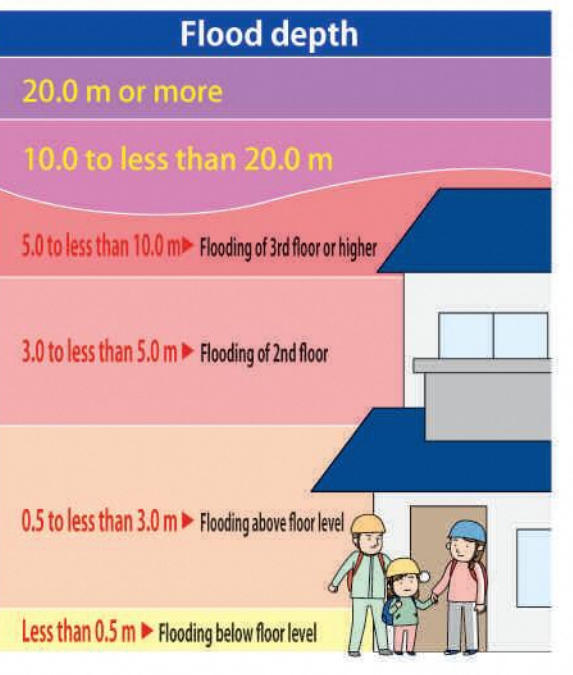
| Emergency Broadcast System Telephone Service                                       |  |
|--|--|
| This service allows you to listen to the content of official emergency broadcasts. |  |
| ☎34-1444, 34-1445, or 34-0866  |  |

| Emergency Contact Information                      |          |
|--|----------|
| Name   | Tel.     |
| Echizen Town Hall                                  | ☎34-1234 |
| Sabae Nyu Fire Department, Nyu Branch              | ☎36-0119 |
| Sabae Nyu Fire Department, Asahi Detachment Office | ☎34-0119 |
| Sabae Police Station                               | ☎52-0110 |
| Ota Hospital                                       | ☎36-1000 |

Areas at risk of building damage, etc. due to flooding (Areas requiring early evacuation)

- Flooding
- Bank erosion



### Legend

- Designated emergency evacuation site (Cannot be used during floods)
- Designated evacuation site (Can only be used during earthquakes)
- Welfare evacuation site
- Water level monitoring station / river monitoring camera
- Rainfall observation station
- Town hall

### Communication Channels for Information from Echizen Town to Residents

|   |   |           |
|---|---|-----------|
| Echizen Town Hall Disaster Control Headquarters | Emergency Broadcast System              | Residents |
| Must take measures to protect lives             | Sound trucks                            |           |
| Must evacuate                                   | Early warning email/website             |           |
| Elderly people must evacuate                    | Contact by phone (e.g. from ward head)  |           |
| Weather information                             | Sabae Nyu Fire Department               |           |
|   | Television and other news organizations |           |

### Warning Levels and Evacuation Information

Since June of 2019, in addition to evacuation information, five warning levels have been provided to give residents an intuitive understanding of the meaning of information, and to clarify the action they need to take. Please take appropriate steps to evacuate according to the warning level.

| Warning level                                      | Evacuation Information, etc.  | Status                               | Actions to be taken by residents                                 |
|--|---|--------------------------------------|--|
| Level 5  | Must take measures to protect lives (issued by the town)                    | Disaster has occurred or is imminent | Your life is in danger. Take action for your safety immediately! |
| You must evacuate once it reaches warning level 4. |   |                                      |  |
| Level 4  | Must evacuate (issued by the town)  | High risk of disaster                | Everyone must evacuate from the dangerous area.                  |
| Level 3  | Elderly people must evacuate (issued by the town)                           | Risk of disaster                     | Elderly people, etc. must evacuate from the dangerous area.*     |
| Level 2  | Heavy rain and flood advisories (issued by the Japan Meteorological Agency) | Worsening weather conditions         | Check your evacuation procedures.                                |
| Level 1  | Early warning information (issued by the Japan Meteorological Agency)       | Risk of worsening weather conditions | Make sure you are prepared for disasters.                        |

\*Anyone else who feels that their life is at risk should evacuate of their own accord. This information may be revised by the government or the Japan Meteorological Agency in the future, so please check for the latest information.